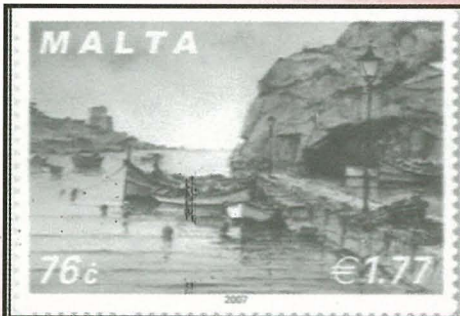
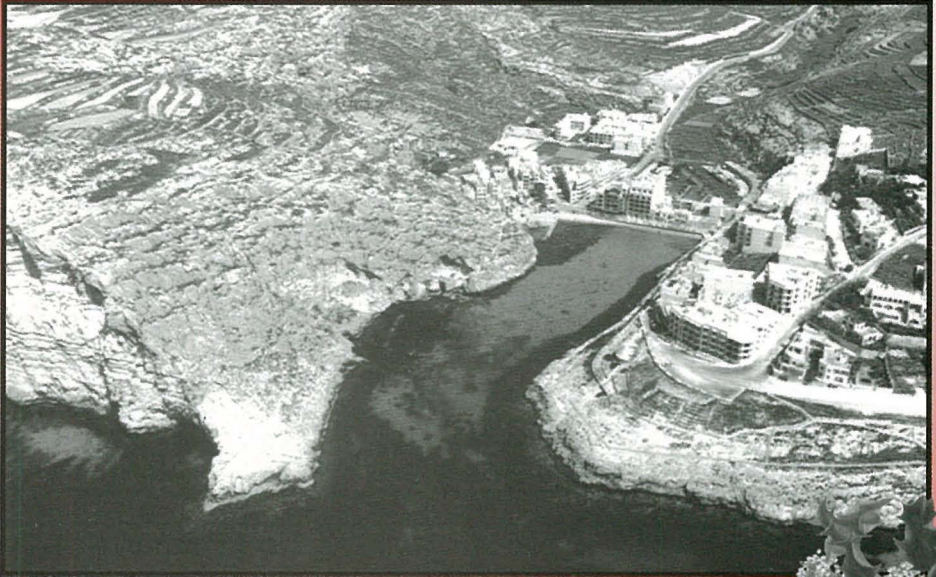




Oct - Dec 2008

No.34 - 4/2008

www.stamps-gozo.org



**GOZO
PHILATELIC
SOCIETY**

Newsletter

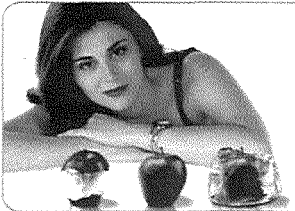


Għal Kull Servizz Bankarju



**AKTAR VALUR
BIEX TIXTRI
JEW TIBNI
DAREK**

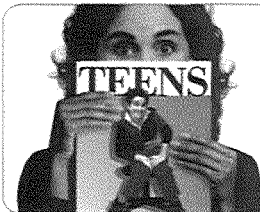
BOV Homelink
SUCCESS



**Aghze!
int u nnota
d-differenza!**

BOV Notice Account

306090



BOV TeenSaver Account

It-tfaddil li jikber malajr daqs it-fal tiegħek



BOV Savings Plan

Il-pjan ta' tfaddil b'bonus!

BOV

www.bov.com e-mail: customercare@bov.com

Front Cover:

- Xlendi Bay Gozo Malta.
- €1.77 (76c) stamp - depicting part of Xlendi Bay from a scenery set which was issued on 1st October 2007 and designed by John Martin Borgin.

CIRCULAR TO ALL GPS MEMBERS

I have the pleasure to invite you to our

NINTH ANNUAL GENERAL MEETING

To be held at the Scouts Headquarters
Santa Dminka Street Victoria Gozo

on

**SUNDAY 11th JANUARY 2009 at 10.00 a.m. with this
AGENDA:**

- 1. Minutes of the eighth AGM.**
- 2. Financial Statement**
- 3. Secretary's Report**
- 4. President's Address**
- 5. Election of Members for Committee**
- 6. Motions**
- 7. Other Matters**

I thus invite paid up members to:

- A. nominate themselves or others to the new **Committee** and
- B. submit notice of **Motions** (regarding amendments to our statute or otherwise).

A Members' Meeting begins at 9.00 a.m.
(acquire additions and information etc.).

The activity will be concluded with the
Distribution of Prizes and Certificates
to all **9th GPS Exhibition** participants.

Junior exhibitors can invite their family too.

Members are encouraged to offer themselves for nomination to the committee.
All members can propose Statute amendments or other Motions.

All members are heartily encouraged to attend.

Antoine Vassallo - Secretary



GOZO PHILATELIC SOCIETY

MEMBERSHIP APPLICATION FORM

Member No.

Name

Address

..... Post Code.....

Tel No. ID Card No

I enclose annual membership fee for €5.00

.....

Signature

Date

Being under 16, I enclose €2.00 for Junior membership. (Date of Birth.....)

.....

Signature

Date

Introduced by..... Member No

I acknowledge receipt of membership application from

.....

with relative fee of

An official receipt and membership card will be issued later.

.....

(signed obo Gozo Philatelic Society)

Date





GPS NEWSLETTER
Quarterly Organ
of
THE GOZO PHILATELIC SOCIETY

First issued on 12th February 2000

Editor: Austin Masini

Opinions expressed do not necessarily represent the Committee's official policy.

Correspondence (and material for publication) should be addressed to: Editor, GPS, PO Box 10, VCT 1000, Gozo, Malta.

© All rights reserved. Requests for reproduction of contents should be addressed to the Secretary.

CONTENTS

No. 34 — 4/2008

GPS Diary (34)	<i>Antoine Vassallo</i>	2
Non Avian Fauna	<i>Antoine Vassallo</i>	3
Australian Malta (13)	<i>John Vassallo</i>	7
Posthaste (7)	<i>Antoine Vassallo</i>	8
Where in the World?! (25)	<i>Antoine Vassallo</i>	10
Promoting Gozo through Philately	<i>Antoine Vassallo</i>	12
Stamp Terms (25)	<i>Emanuel Vella</i>	14
Script by Script (25)	<i>Antoine Vassallo</i>	16
E & O not E (20)	<i>Antoine Vassallo</i>	17
Beg. Sect. - The Hobby of Stamp Coll.	<i>Anton V Said</i>	18
Malta Overseas (7)	<i>Antoine Vassallo</i>	20

GOZO PHILATELIC SOCIETY

Founded on 3rd September 1999

For "the promotion of the hobby"

"the provision of a point of reference" and "co-ordination"

Postal address: PO Box 10, VCT 1000, Gozo, Malta.

email address: www.stamps-gozo.org





GPS DIARY (34)

Antoine Vassallo (Secretary)

- July-August 2008:** Anthony Grech leads once-weekly philatelic sessions at the Don Bosco Summer Club.
- 10th August 2008:** Card for St Lawrence commemorative handstamp (designed by our Anthony Grech).
- 4th September 2008:** Committee meeting discusses preparations for November Exhibition.
- 5th October 2008:** Card issued for Handstamp (designed by Anthony Grech) commemorating 50th anniversary of St George's Basilica.
- 26th October 2008:** Members' Meetings on last Sunday of the month resume at Victoria Scouts HQ.

**watch out for new COMPETITION from next issue:
"Identify the Issuer"**

Members' Meetings

are held on the last Sunday of the month

30th November 2008, 28th December 2008

25th January 2009 & 22nd February 2009

From 9 to 11 am

at Victoria Scouts HQ (triq Santa Dminka).

Exchange, purchase, information etc

Entrance Free!

All Juniors will receive a gift of free stamps



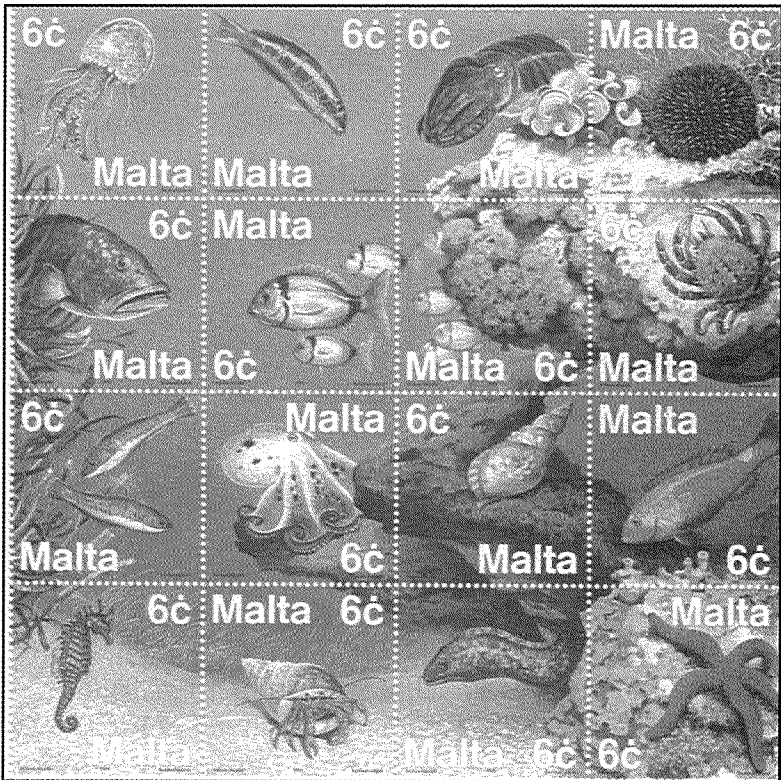


Non-Avian Fauna on Malta's Stamps (1899-2007)

(Antoine Vassallo)

(continued from last issue)

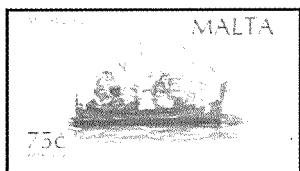
Fish are not the only marine creatures. The **1999** Sea Fauna (**6c**) sheet showed quite a few: **coral**, two **crabs** (hermit crab and spider crab – and later on the **2007** End of Lira **MS**), **cuttlefish**, **jellyfish**, **octopus**, **starfish**, **triton's trumpet** and **sea urchin**. This last had previously featured on the **1998** Ocean **6c**. **Seashells** were covered in the **1979** Marine **2c** **25c** and **2003** Seashells sheet (**6x7c**).





A further marine animal is the **dolphin**. After being shown on 1972 Decimal (and reappearing on 2007 End of Lira MS), 1973 Definitives LM2 and 1998 Ocean 2c, the 2004 Indigenous Fauna sheet (16c) gave us two more (common dolphin and striped dolphin). But dolphins are of course **mammals**, as is the **monk seal** also included in this set.

“Foreign” mammals include **camel** (1979 Christmas 7c, 1992 Christmas 10c, 2002 Christmas 75c, 2006 Christmas 16c), **koala** (1999 UPU 37c), **bear** (one of the 2007 Occasions), **lion** (1926 Definitives 1/6, 1928 Definitives (P&R opt) 1/6, 1930 Definitives (P&R) 1/6, 1938 Definitives 1/6, 1948 Self Government 1/6, 1993 Councils and 1998 Valletta MS), **monkey** (1978 Durer 17c) and **panda** (1991 WWF).

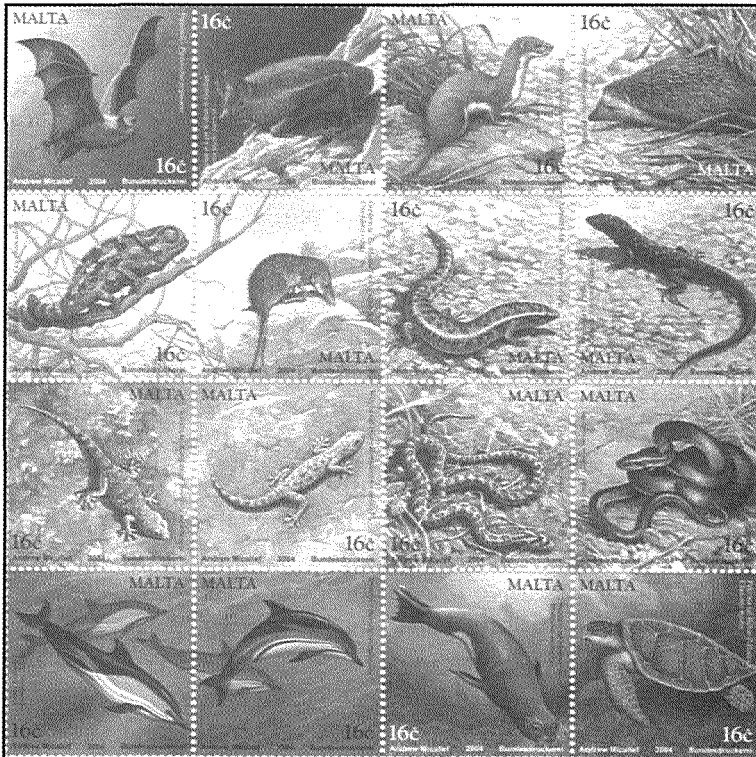


“Locals” include **goat** (1964 Brucellosis 1/6 and 2000 20th century 27c), **lamb** (1970 Exhibition 2d, 1986 Peace 8c, 1993 Councils and 2006 Christmas 27c), **pig** (1994 Commemorations 14c) and **sheep** (various Christmas stamps 1970 1/6, 1975 8m, 1977 1c 11c, 1987 2c, 1988 3c, 1990 10c 25c, 1992 3c 10c, 1997 6c 26c, 2002 16c 37c and 2005 50c). Cows or **oxen** can also be seen (1963 Freedom from Hunger, 1977 Tapestries 11c, 1994 Commemorations 14c and 2002 Christmas 75c).



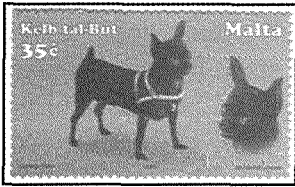


The **2004 Indigenous Fauna (16c)** set offers quite a few mammals: **shrew, hedgehog, bat, pipistrelle and weasel.** This last also appeared on the **2007 End of Lira MS.** Further examples are given by the **2006 Pets sheet: chinchilla (7c), ferret (7c), guineapig (7c) and rabbit (7c).** This last was also featured on two more stamps (**2002 Cuisine 75c** and **2005 Europa 51c**).



The **Pets** set includes two **dogs**, described as **chihuahua (7c)** and **pointer (7c)** respectively. The **2001 Dogs** set features these four: **6c** pharaoh hound **16c** hunting dog **19c** Maltese dog



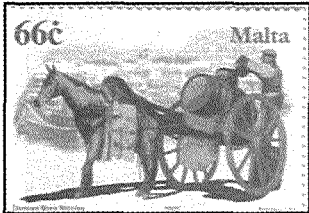


and 35c pocket dog. But dogs had previously been shown at least three times (1977 Tapestries 20c, 1996 Cali' 14c and 2000 Children 6c).

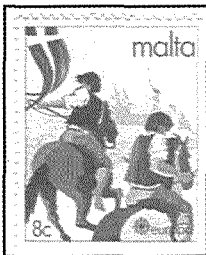


Two cats were included in the 2006 Pets sheet (both 7c): domestic and siamese. The 2004 Cats had already been issued (7c 27c 28c 50c 60c).

A further mammal included in the Pets set was the pony (7c). In fact equids (including colt, donkey, horse and mule) are quite common. I must mention the 2005 Equines set (11c 15c



62c and 66c). But examples have appeared all along the years. So I conclude with this undifferentiated list: 1935 Silver Jubilee, 1973 Definitives 10c, 1975 Christmas 7c5, 1977 Tapestries 11c, 1978 Tapestries 2c 11c, 1979 Tapestries



2c, 1978 Durer 1c7, 1979 Christmas 5c 11c, 1981 Europa 8c, 1981 Defs. 7c, 1981 Commonwealth 12c, 1984 Police 8c, 1987 Christmas 2c, 1990 Christmas 10c, 1991 Heritage LM1, 1997 Europa 35c, 1997 Christmas 6c 16c, 1999 Tourism 27c, 2002 Christmas 7c 37c 75c, 2003 St George 3c 7c 14c 27c, 2004 Art MS, 2005

Christmas 50c and 2007 Toys 2c.

(to be continued)





Australian MALTA (13)
*series of glimpses at pages from
 the prize-winning collection built up by
 John Vassallo, GPS member in Australia*

The 1868 – 1881 printings
(ALL Ink CC)

	P12.5 Rough - Buff 10 7MY68 200 sheets	P14 Dull Orange 11 9DC69 182 Sheets	P12.5 Clean 12 2JHL70 197 Sheets	
P14				
	Orange Buff 13 18OC71 198 sheets	Dull Orange 14 31OC72 214 Sheets	Gold Yellow 15 23JA74 200 Sheets	Yellow Buff 16 6AP75 213 Sheets
	Pale Yellow Buff 18 12JA77 208 sheets	Yellow Buff 19 29SB77 199 Sheets	P14x12.5 Yellow 21 14JA79 213 Sheets	Orange Yellow 22 10NO79 209 Sheets
	Br Orange Yellow 23 27AU80 211 Sheets	Pale Yellow 24 28MR81 209 Sheets	1878 Letter to Valletta franked with a 1/2 d internal stamp with impostament margin at left. The stamp is from the 20 th Printing P14x12.5 Yellow Buff (214 Sheets - Invoice# on 15 th May 1876).	1878 Letter to Valletta franked with a 1/2 d internal stamp with impostament margin at left. The stamp is from the 20 th Printing P14x12.5 Yellow Buff (214 Sheets - Invoice# on 15 th May 1876).





POST HASTE (7)

*continuing an irregular series about the interesting
Story of the Post*

(Antoine Vassallo)

Foreign Turks

As explained in the last issue, resident foreigners in the Turkish Empire had treaty rights to run their own postal services – various countries thus opened post offices in numerous cities. A bird's eye view should be interesting.

An **Austrian** PO was set up in Galata (1748) separately from the Constantinople embassy – and the service extended to Smyrna. The Austrian Lloyd Steam Navigation Company carried mail after 1836.

British embassy mail started in 1832, with an Army PO being established in Constantinople 22 years later as a sorting and forwarding office for the Crimean forces. Because of speculation with Turkish currency, 1885 saw stamps so overprinted – used concurrently with British stamps overprinted *Levant*.

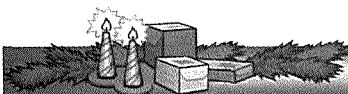
Egyptian POs were established in Constantinople (1866) and later in other cities, using normal stamps (distinguishable by the cancellations).

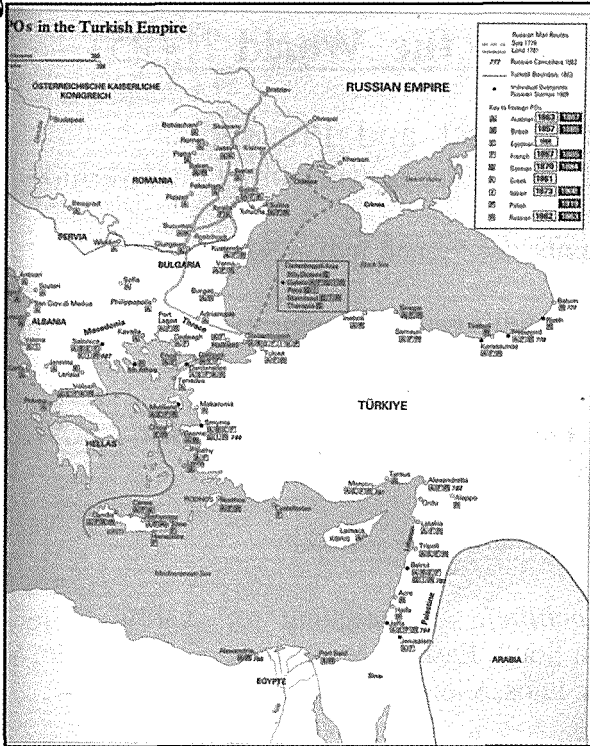
The first **French** PO was opened in 1812 in Constantinople (“French Levant”).

A **German** office was opened in Pera in 1870. There were various changes and moves until the last one closed in 1914.

The first **Greek** postal service was established at the Constantinople consulate in 1834, with numerous other POs opened in other cities in later years.

Both Venice and Naples maintained postal connections





with the Levant in the 18th century but these had lapsed before Italy's unification. Postal Agencies and Offices began being opened (some by threat of force!) from 1873, using stamps overprinted *Estero* or even specifically.

The **Polish** consulate had a PO in Constantinople from 1919 to 1923.

Romania made an unsuccessful attempt to restart a service in 1919.

A consequence of the 1774 Kutchuk Kainarji Treaty was a regular **Russian** postal service. In 1856, after the Crimean War, it was entrusted to ROPIT (the Russian Company of Trade & Navigation). A separate post was organized by General Wrangel to serve military and civilian White Russian refugees from the Crimea in camps around Constantinople and other places.

with acknowledgements to Rossiter & Flower's Stamp Atlas





Where in the World ?! (25)

(Antoine Vassallo)

Stamp Issuers Past and Present

Indian Ocean Territory see British Indian Ocean Territory.

Indian Settlements see French Indian Settlements.

Indian UN Force contingent in Congo: overprinted stamps in 1962.

Indian UN Force contingent in Gaza (UNEF): overprinted stamps in 1965.

India Portuguesa = Portuguese India.

Indochina (Indochine): consisting of various French colonies in South East Asia with stamps 1889-1946; see Cambodia, Laos, Vietnam etc.

Indo-Chinese Postoffices in China: (Canton, Chungking, Hoihow, Mongtze, Pakhoi and Yunnanfu) 1900-22.

INDONESIA: Republic consisting of various islands in South East Asia, formerly Netherlands Indies, with stamps from 1945.

Indore (Holkar State of Indore): Indian state with own stamps 1886-1947.

Ingermanland: Russian region bordering Finland with own stamps (*Pohjois Inkeri*) in 1920.





Inhambane: town in Portuguese East Africa with own issues from 1895 to 1920 when began using Mozambique stamps.

Inini: territory in French Guiana with own stamps 1932-1946.

Inner Mongolia = Mengkiang.

International Commission in Indo-China: overprinted stamps for use in Cambodia, Laos and Vietnam 1954-1968.

International Education Office stamps (*Bureau International d'Education*): issued by the Swiss PO for use by officials of this international organization 1944-1960.

International Labour Office stamps (*Bureau International du Travail*): issued by the Swiss PO for use by officials of the international organization 1923-94.

International Olympic Committee stamps (*Comite International Olympique*): issued by the Swiss PO for use by officials of this international organization in 2000.

Bold italic = Inscriptions;

BOLD CAPITALS = Current Issuers;

Bold = Former Issuers.

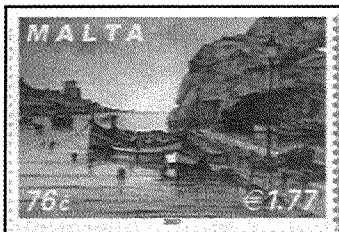
(Since it is obviously impossible to be completely exhaustive, you are encouraged to bring any gaps to my notice!)





PROMOTING GOZO THROUGH PHILATELY

Xlendi

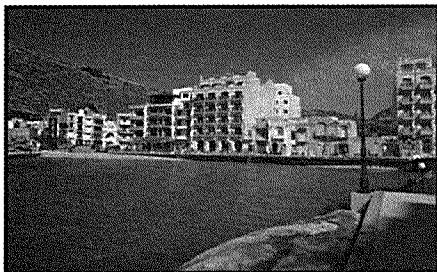


One of the 2007 Scenery set ably designed by John Martin Borg (76c) gives an “exact” view of an important Gozitan location: romantic and picturesque Xlendi.

Xlendi Bay is a popular beach on the southwest coast of Gozo. It can easily be reached either through Fontana or from Munxar. Its small sandy beach is considered ideal for both young and old, while the more adventurous can snorkel off the rocks bordering the bay. Actually, because of its reef formations, Xlendi is an ideal diving site even for beginners, the caves and rugged reefs providing suitable conditions.

Nestled within a valley and boasting a secluded harbour (home to a fleet of colourful fishing boats), this attractive resort offers a serene and tranquil atmosphere. It has been described as an idyllic landlocked bay and the glorious blue-green water was for many years a haunt of artists and photographers. This delightful fjord-like inlet lies at the end of a deep, lush ravine which was a river bed.

Xlendi is now equipped with several tourist-related amenities,



such as bars, restaurants and hotels. In fact this formerly sleepy fishing village sees its population swell substantially during the summer months, as visitors flock to sample



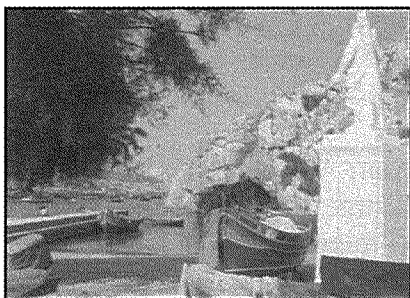


the fine restaurants situated along the waterfront. Moreover it seems to be on the must-visit list of most day-trippers to the island. Actually, a walk in the crisp and nimble air and the welcoming smile or acknowledging nod of the local farmer and shepherd serve as an excellent appetizer!

One can also climb the stairs on the right to ascend the cliffs which flank the resort, thus being able to enjoy the interesting - even dramatic - views. You will find here the 1650 Xlendi Tower perched on the promontory, "protecting" the bay's entrance. The scenic coastline is pitted with hand-dug salt pans - a previously important industrial occupation.

A visit to the *Ghar ta' Karolina* - a natural grotto which was once used by nuns for swimming - is often considered a must, especially because of its historical connection with the well-known philanthropist Carolina Cauchi. Maltapost commemorated her centenary in December 2007.

First recorded as *xilendi* in a 1550 contract, the name is probably derived from *xelandion* - a type of Byzantine vessel which may have been quite common anchored there.



A white statue of the apostle Saint Andrew, patron saint of fishermen, stands looking out over the port. However the church is dedicated to the Virgin Mary of Mount Carmel. The annual August feast in her honour combines a variety of

entertainment, attractions and traditions. The front section of the building dates back to 1868. It was enlarged at the rear in 1969 and consecrated in 1974.

(cont on page 24)





stamp terms used in PHILATELY (24)

(Emanuel Vella)

Mayflower Mail: In 1957 a replica of the Pilgrim Fathers' vessel "Mayflower" was built and sailed across the Atlantic to the original landfall of 1610 at Plymouth Massachusetts. The ship's mail consisted of souvenir envelopes, which were postmarked on board with a special cancellation and back-stamped on arrival by the U.S.A. Post which forwarded them to their destinations.

Mbledhja Kushtuese: O/p on 1939 Albanian stamps during Italian occupation.

Mbretnija Shqiptare: (Kingdom of Albania). O/p of Albania's stamps in 1928 on accession of King Zog.

McGrealy Express: A river motor boat mail service run by S.C. Marcuse between Dyea and Shagway, Alaska during the 1898 gold rush. Used "locals" so inscribed. They depicted a dog sleigh.

McIntire's City Express Post: A mail service in New York for which Local stamps were issued in 1859.

McKenna, K.C.V.O., Sir Bertram: Australian sculptor, whose profile portrait of King George V was the basis of most of the stamp designs of the reign.

McMillan's City Despatch Post: A Chicago mail service for which locals were issued in 1855.





Mearis' City Despatch Post: Various "Locals" were issued in Baltimore, U.S.A. in connection with a mail service organized by Malcolm W. Mearis in 1864.

Mecklenburg-Schwerin: Former grand duchy of Germany, which issued its own stamps from 1856 to 1867. In 1868 stamps of the North German Confederation were introduced and since 1871 those of Germany have been used. Area 5100 sq miles; Capital Schwerin.

Mecklenburg-Strelitz: Former Grand duchy of Germany, which issued its own stamps from 1864 to 1867. Subsequent history similar to Mecklenburg-Schwerin. Area 1130 sq miles; Capital: Neu-Strelitzm.

Medallions: Name given to the 1850/65 issues of Belgium-so called from their medallion-style portrait of Leopold I - in contrast to the 1849 issues known as the "Epaulettes".

Medellin: Town of Colombia which issued its own local stamps in 1888, 1903-04, 1909-14. It had a population of about 120000 and an altitude of 4900 feet.

Media or Medio: (Spanish) Half Values found on Spanish officials 1854/5 and on early stamps of Mexico.

Mchalek: Ethiopian currency unit 1894/7.

Melville Fred J: Prolific philatelic author and writer. Founder of the Junior Philatelic Society. He died in January 1940.

(to be continued)





Script by Script (25)

(Antoine Vassallo)

Switzerland produced its first stamps in 1850: these federal issues followed by a few years separate cantonal ones, including Geneva and Zurich (example shown).



The Federal issues were printed by Berne's Durheim. The designs showed a central cross with various decorations but no words except for the face value and *Poste Locale* or *Rayon*.



In 1854 a completely new design appeared (showing "Helvetia" – a symbolic representation of the country), engraved by Munich's Vogt. There exist a great many different papers and shades, being printed at both Munich and Berne. It is interesting to note that the currency is shown in three different languages (its "official" ones).

(cont. to page 22)





E & O not E (20)

(Antoine Vassallo)

*Glances at stamps with design or printing mistakes
(well-known or obscure)*

Great Britain's first 1967 Christmas set (designed by S Rose) comprised three classic nativity paintings. The printing (by the then contract-holders Harrison & Sons) obviously encountered problems: besides numerous shades, missing colours also exist. Moreover all values can be found with missing phosphor bands.



The 3d, showing “Adoration of the Shepherds” (Seville School), is here seen with gold missing. Less prominent are two other missing colours: rose and olive-yellow.



The 4d, showing “Madonna and Child” (by seventeenth-century Spaniard Bartolome Esteban Murillo), is here seen with both gold and greenish yellow missing.

Interestingly the 1s6 value had this written out, against UPU regulations – and the Queen’s head was positioned quite stangely! The painting chosen is another “Adoration of the Shepherds” (by one of three



seventeenth-century French brothers, probably Louis le Nain).

I show this stamp with missing gold too.

Copies are also known with lemon or ultramarine missing. This set is notable also for being the last on watermarked paper.





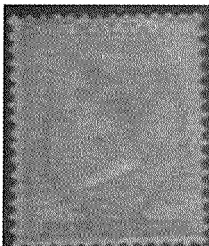
BEGINNERS section

The Hobby of Stamp Collecting

(Anton V Said)

In the previous article we mentioned that in the past it was quite common for stamp collectors to choose the British Commonwealth as a subject for their stamp collection, but besides it is still a very vast subject, the British Commonwealth today is quite different with regards to its members as it used to be in the past. So one may get rather confused while concentrating on it. But one can still take certain countries which are in the Commonwealth for his stamp collection, like Australia, Canada and Great Britain itself, or one can choose a country from each of the five continents. This may make quite an interesting selection, giving also an indication that the British Commonwealth is spread out in the five continents.

But an ideal suggestion for beginners, is that of starting collecting Malta stamps. Besides having very attractive and artistic stamps many of them depict the historic events of our nation in a very interesting way. Speaking of historic events one may then divide his collection into historical periods. The ideal way to start this collection is to go to the first stamp issued in 1860, the half penny yellow of Queen Victoria. But this may seem rather quite difficult for beginners, as



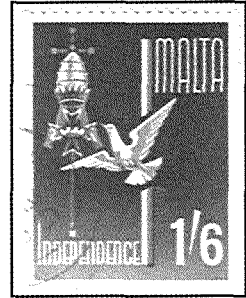
*Queen Victoria
1/2d yellow*

besides being rather hard to find, it is rather quite expensive. The more practical way to go about it then is by taking a historical period and start from there, say from 1964 when





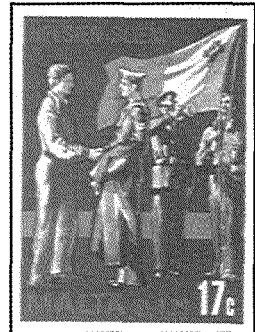
Malta gained its Independence, or from 1974 when Malta became a Republic or from March 1979 when the British Forces left Malta. By using such a system one would be building his collection quite interestingly and if the young collector happens to suspend his hobby for some time, for reasons he knows best, at least he would be having complete historical sections in his album in place.



Independence 1964



Maltese Republic 1974



Freedom Day 1979

After all that is the main aim and satisfaction of such a hobby, that of having a complete piece of work and not something which is left unfinished.

(to be continued)

Young members who will renew their membership for year 2008 will be given a token of free stamps. Now it is the time to renew your membership.





MALTA OVERSEAS

local connections on foreign stamps (7)

(Antoine Vassallo)

The Sovereign Military Hospitaller Order of St John of Jerusalem Rhodes and Malta (**SMOM**) or “Knights of Malta” began producing its postage stamps in 1966. Up to 2005 (when the euro was introduced), the Order’s own original currency was used: *scudi*, *tari* and *grani*. Although these Grand Magistry Post Office issues are not *recognized* by the Universal Postal Union, mail so stamped can be sent to the over fifty countries with whom there exists a postal agreement: the essential thing is that posting is made at the Magistral Post Office in the Roman *Via Bocca di Leone*.

Understandably in view of the name, many “Malta” collections include some or all of these stamps – a strong proportion of which can be considered as having a direct Maltese connection through the subject or design chosen.

I refer here to the 1966 Christmas set (three values, collected



in a sheet too) highlighting the Flemish tapestries at St John’s Co-Cathedral in Valletta. This was of course built as the Knights’ conventual church during their reign here. These

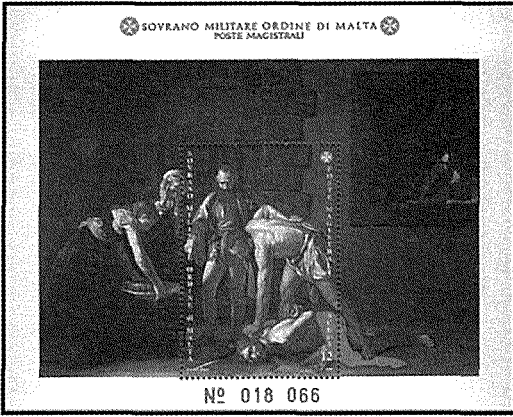
twenty - nine masterpieces of a great historico-artistic value (ordered by Grand Master Perellos from *Judocos de Vos* in Brussels, some





of which based on a design - or “cartoon” - by Peter Paul Rubens) later received multicoloured philatelic coverage through Malta’s series from 1977 to 1980.

The co-cathedral is also famous for various paintings,



including Caravaggio’s “Beheading of St John” – this was shown in a 1992 set (one of the regular “art” issues): a 10 scudi stamp and a 12 scudi sheet. The other Caravaggio there (the “St

Jerome”) was reproduced as a single-value set in 1996 3. I need hardly add that Michelangelo Merisi (1573-1610 – known as Caravaggio from his birthplace) is not missing



either from Malta’s stamps: these paintings, after being included in the 1970 Council of Europe Exhibition set, were again chosen for the 2007 commemoration of the fourth centenary

of his arrival.

I intend returning to this issuer in the future.





Script by Script cont from page 16

In 1862 the design was adapted to include the name (in Latin – a “neutral” language!). However the Postage Due stamps (from 1878), designed and engraved by Durussel , are again “anonymous”.



New Postage Dues (the work of l’Eplattener and Geel) appeared in 1910. A few months later the same design was used also for Franks (stamps distributed to charity hospitals for them to have free mail).



The committee of the Gozo Philatelic Society wish all its members and everyone a Merry Christmas and a Happy New Year.



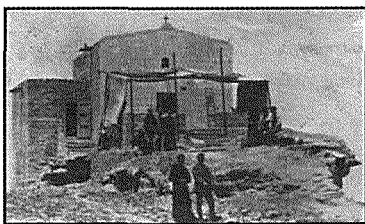


The 125th Anniversary from the Call of Our Lady of Ta' Pinu to Karmni Grima and Frangisk Portelli - 1883-2008

(Anthony Grech)

In our previous issue on page 19 we printed a copy of the commemorative card which the authorities of the national shrine of Ta' Pinu together with our Society, issued to mark this historic event.

The story in brief goes as follows: It all happened on the



morning of the 22nd June 1883 when Karmni Grima, a spinster from the village of Gharb, while in the vicinity of the Chapel of the Assumption of the Blessed Virgin Mary into Heaven, better known as *Ta' Pinu*, heard a

voice coming from the chapel "*Ejja, Ejja, Ejja....*" (Come, Come Come....). She entered and the voice from the altarpiece, invited her to "Recite three Hail Marys in remembrance of the three days during which my body lay in the tomb".

After three years, she disclosed her secret to Frangisk Portelli also from the village of Gharb, who confided to her that he also had received messages in the chapel. He had been invited to venerate Christ's hidden shoulder wound. When then facts were revealed, a large number of Gozitans and Maltese flocked in pilgrimage to the chapel.

Then between 1916 and 1931, a magnificent sanctuary was built. Nowadays this National Shrine is visited by thousands of pilgrims from all over the world. Those who enter the chapel and pray in silence, acknowledge that they find peace and their soul rejoice in the presence of the Holy Eucharist and in front of the image of the Blessed Virgin Mary of Ta' Pinu.

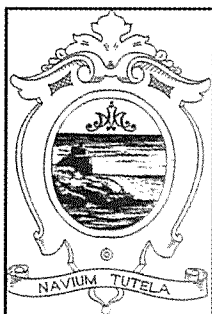




Promoting Gozo through Philately

(from page 13)

The diocese treats it as falling under Kercem's responsibility but, for civil and administrative purposes, Xlendi is part of Munxar since the creation of local councils.



It does have its own motto: *Navium Tutela* ("protection for vessels"). The emblem consists of a promontory with a tower upon it rising from a blue sea on an orange field with an M in reference to the Blessed Virgin Mary. This emblem was designed by Mr Joseph Sagona on the initiative of Mgr Joseph Bezzina.

Excavated in the cliffs behind the church, there is a reminder of the Cold War: the only one in Gozo among a total of eight around the whole of Malta following a decision by the British Colonial Office over fifty years ago to build underground flour mills which would at least provide the staple bread should other sources be cut off. The project was a huge undertaking, consisting of an entrance tunnel (30 metres long, 2.5 high and 3 wide) leading into a large chamber which was divided into three floors housing storage, grinding and milling equipment. The silo at the rear (connected to the machinery by mechanical augers) had a storage capacity of approximately 1,000 tons of wheat. Installation of this "emergency mill" was in the hands of Thomas Robinson of Rochdale, England.

This being a philatelic periodical, I should mention that a sub post office exists in Xlendi and in fact is included in the set of "Millennium" cards we produced in 1999. After a period of closure, it was reopened in 2007, an occasion for the GPS to offer a special cover. To really be exhaustive, I add that it is located in Triq il-Punici, while Pjazza l-Anfori hosts a letterbox.

Antoine Vassallo



FOR SALE

- Capitulation of the French Special hand stamp cards (set of 2). €2.50
- A commemorative Registered Cover from Victoria Gozo Post Office to commemorate two Gozitan Patriots namely:- Sir Adrian Dingli & Arch Saverio Cassar. €4.66
- A Commemorative Card showing Guzeppi Grech known as Zeppu Kola, the last owner of the Xaghra Windmill doing maintenance work. €2.50
- Card to commemorate Holy Week Traditional Celebrations. Limited Edition of 100. €1.16
- Card to commemorate the 7th Gozo Philatelic Exhibition (3 to 12 November 2006) including the 8c Christmas stamp and cancelled with the Christmas First Day of Issue hand stamp Limited Edition of 130. €1.50
- Special card issued on the occasion of the TOY STAMP issue. Cancelled on the first day of issue at Xaghra Post Office featuring the "POMSKIZILLIOUS MUSEUM OF TOYS" found in Xaghra Gozo. Limited Edition of 75. €1.75
- Special "In Memory" card hand stamped at Gharb Sub Post Office on the occasion of the celebration of the Holy Eucharist held at Ta' Pinu Shrine, for the repose of the soul and in memory of Mr Anthony Fenech, a great philatelist and a sincere friend of the Gozo Philatelic Society. Limited edition of 160. €1.75
- Card in the form of First Day of Issue of the re-printed 1c stamp from the 2004 Definitive Flowers set. This stamp was first issued in Gozo on the 19th October 2006. Limited edition of 183. €0.60



FOR SALE

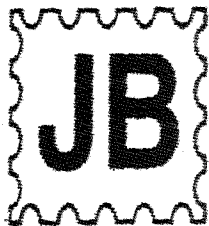
- Cover issued on the occasion of the Christmas set stamp issue (2005) with a personalized stamp of Chev. Paul Camilleri Cauchi - the stamp set designer. These covers are individually signed by the artist himself. €2.50
Limited edition of 130.
- Card to commemorate the 50 years of Europe. Cancelled with the special handstamp issued for the occasion during the festivities held at Nadur Gozo. Limited edition of 75 cards. €2.50
- Registered Hand Coloured cover to commemorate the issue of two stamps depicting Gozo Balconies (one at Victoria and the other at Gharb). The covers were hand stamped with the First Day of issue Post-Mark. €2.50
Limited edition of 75 covers.
- Card commemorating the GPS 8th Annual Exh. 2007 and the launching of the GPS website. €1.00
- Set of two cards with first day of operation hand-stamp of the new Post Offices at Xlendi and St Lawrence. €2.50
- Set of two registered covers with two Gozo Scenes Stamps (Xlendi and Mgarr) on their first day of issue. €4.50
- Card commemorating the 125 Anniv from the Call of Our Lady of Ta' Pinu to Karmni Grima and Frangisk Portelli. Each card is cancelled with a special handstamp issued by Maltapost and stamped at the National shrine on Sunday 22nd June 2008. The card has an embossed metal image of Our Lady of Ta' Pinu. €3.00
Limited edition of 1000.
- Registered cover commemorating the issued of a stamp depicting St Paul's statue found at Munxar Parish Church Gozo. Each cover is postmarked with a special postmark of the first day of issue of the *Annus Paulinus* set of stamps. €2.50
Limited edition of 50.
- Malta stamps in mint condition are also available at 2/3 catalogue price.

Those interested may contact:

Mr Anthony Grech on Tel No. 21553338

- Please note that members can contact the Secretary for free temporary loan of various philatelic publications - a list will be shown in a future issue.
- When sending by post, use only cheques drawn on Maltese banks (or Money Orders) or mint Malta Euro stamps to pay your subscription or acquire items shown. Stamps with values in old currency are not accepted.
- Membership fees include Newsletter delivery and so for overseas members is 12 Euro - they can use Money Orders or new currency notes.
- Members can acquire a copy of our Statute (approved during the 5th AGM) by contacting the Secretary – it can also be downloaded from our Website.
- Young members who will renew their membership for year 2008 will be given a token of free stamps. Now is the time to renew your membership.
- We also welcome letters asking for help regarding stamp identification etc. Anything published will merit a philatelic gift! And Juniors will receive a memento in any case!





The JB Catalogue of Malta Stamps and Postal History

Published by Sliema Stamp Shop

91 Manwel Dimech Street Sliema - Malta

Eighteenth Edition

in Colour

is now

on sale

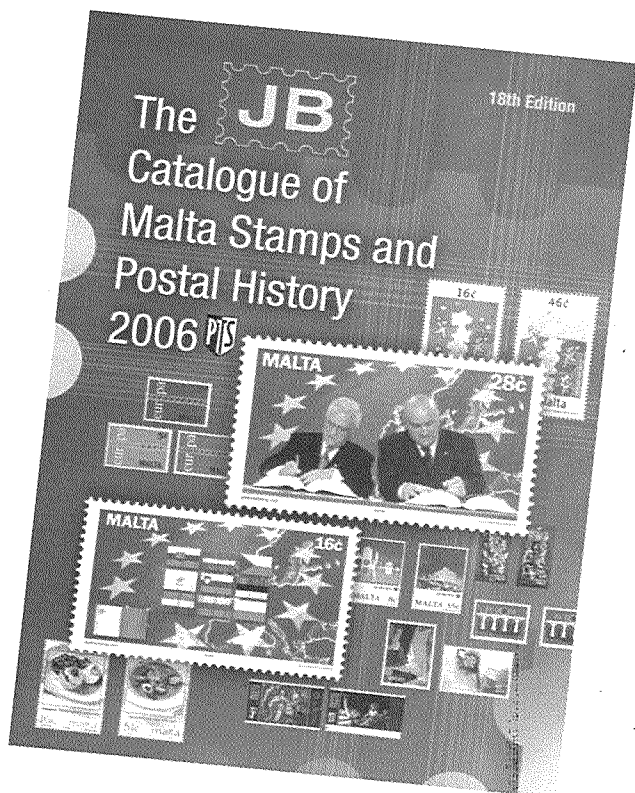
Price

€13.98

Lm6.00c

Tel: 21342189

Fax: 21346069



www: sliemastampshop.com.mt

e-mail: sales@sliemastampshop.com.mt